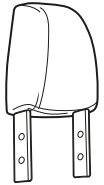


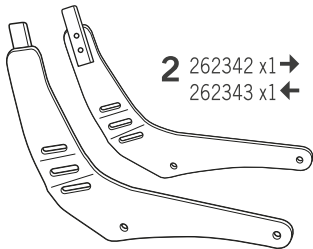
# SHAD

## HONDA CMX 500 REBEL '17-'18

KIT SISSY BAR HORB57SN



1 H1RC00 x1



2 262342 x1 →  
262343 x1 ←



3 304211 x4  
M8 x 15 DIN 933



4 303020 x8  
Ø8



5 304053 x4  
M8 x 30 DIN 7380



6 303045 x8  
Ø8

### ! WARNING!

**GB** Do not fully tighten the screws until it is ensured that the KIT is correctly attached and aligned.

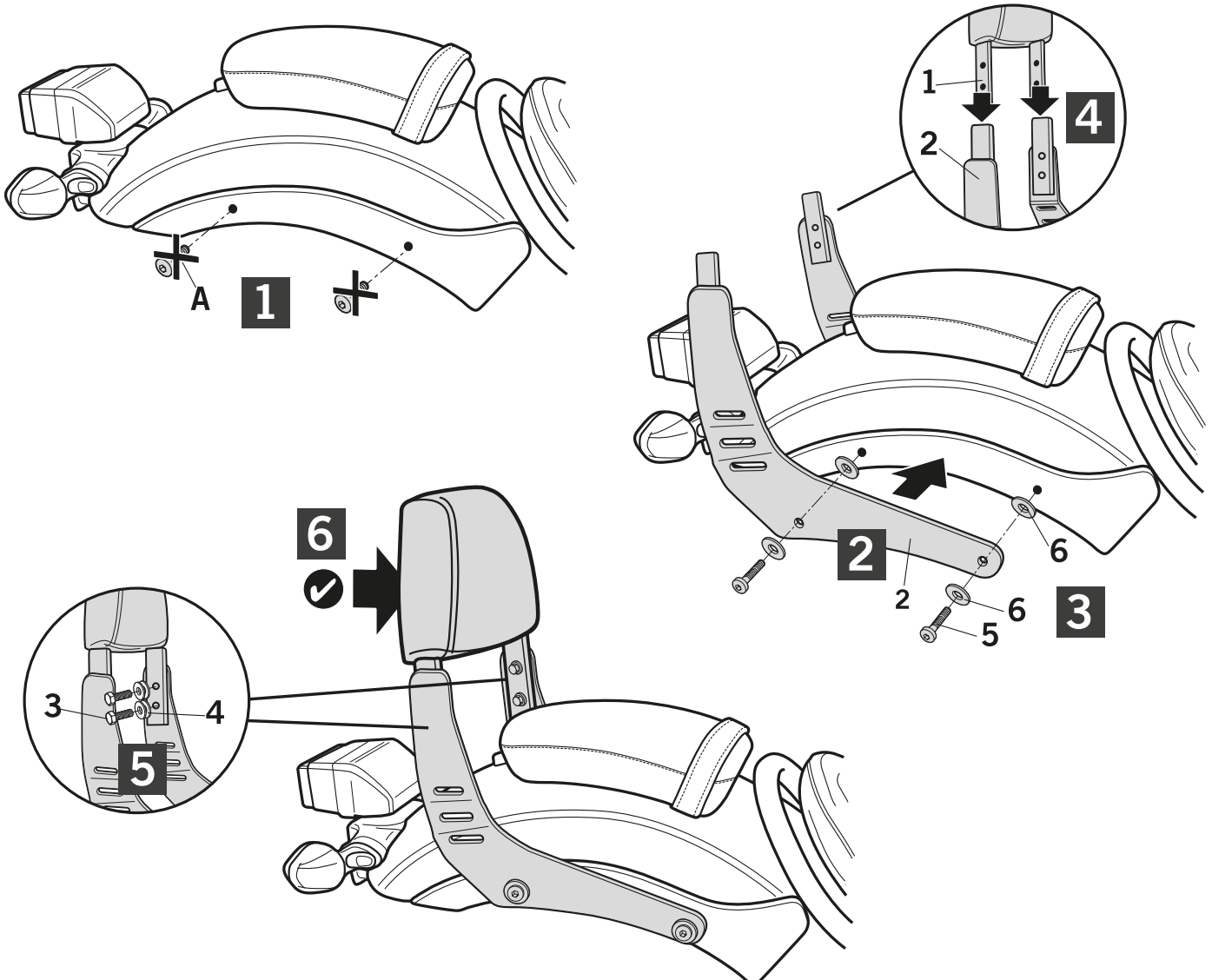
**E** No apretar los tornillos del todo hasta asegurarse que el KIT está correctamente colocado y alineado.

**D** Ziehen Sie die Schrauben nicht ganz fest, bevor Sie sich nicht vergewissert haben, daß der Bausatz korrekt eingestellt und ausgerichtet ist.

**I** Non stringere del tutto le viti fin tanto non si è sicuri che il kit è collocato correttamente e allineato.

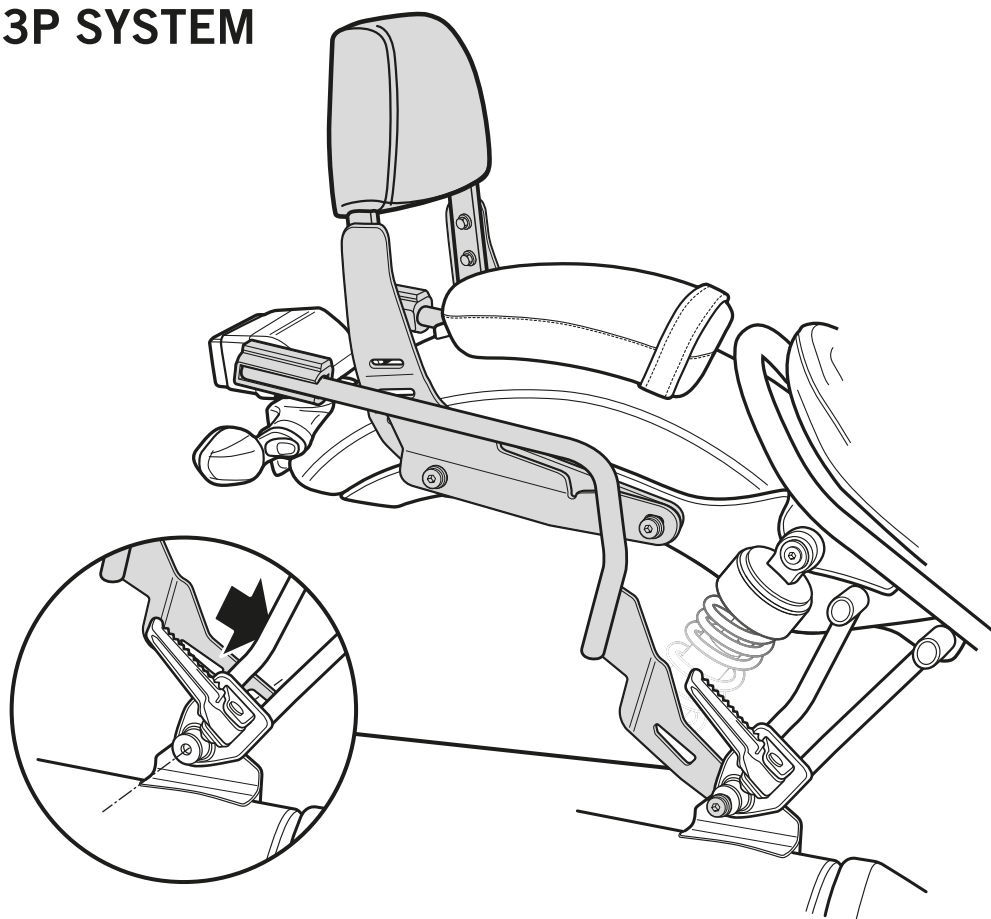
**F** Ne pas serrer les vis avant d'être sûr que le KIT est correctement monté et ajusté.

**ATTENTION:** For a full equip assembly, mount the 3p system after the Sissy Bar.



**IMPORTANT:** Based on European models. For compatibility with models in other continents, check [www.shad.es](http://www.shad.es)

## SISSY BAR + 3P SYSTEM SH23



## SISSY BAR + 3P SYSTEM SH35/SH36

