

## FOLLOW US



[www.ridexperience.com](http://www.ridexperience.com)  
[www.ridexperience.de](http://www.ridexperience.de)  
[www.ridexperience.es](http://www.ridexperience.es)  
[www.ridexperience.fr](http://www.ridexperience.fr)  
[www.ridexperience.it](http://www.ridexperience.it)

[www.metzeler.com](http://www.metzeler.com)

**METZELER** 



**COMPLETE  
RANGE  
MOTORCYCLE  
TYRES  
2012**

**METZELER**   
ALWAYS TWO WHEELS AHEAD

## Range

APPLICATION CHART & SEGMENT DEFINITION	4
RACING	9
SUPERSPORT	13
SPORT TOURING	15
CLASSIC	20
CUSTOM TOURING	22
ENDURO STREET	28
ENDURO	32
MOTOCROSS	36
SCOOTER	40
SCOOTER / MOPED	42



www.ridexperience.com  
 www.ridexperience.de  
 www.ridexperience.es  
 www.ridexperience.fr  
 www.ridexperience.it

[www.metzeler.com](http://www.metzeler.com)

## INTERACT MULTI ZONE TENSION

### RACETEC INTERACT K3

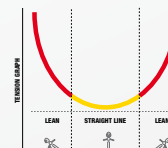
Metzeler's Racetec supersport racing tyre was the first racing product to feature the patented **Interact™ Multi Zone Tension technology**. Thanks to its 3 variable tension zones it delivers tailored premium performances for all track situations in order to get the Pure Race Time.

- ✓ Compact tread pattern layout designed to manage the trade-off between pure and lasting performance.
- ✓ New wider application compound range satisfying diverse track conditions.
- ✓ Available in 3 compounds for professional racing (K0,1,2) and one (K3) for street usage.

## INTERACT TECHNOLOGY



LOW TENSION > MAX GRIP  
 HIGH TENSION > MAX SUPPORT



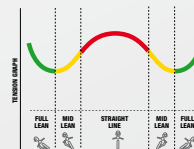
### SPORTEC INTERACT MS

The **Interact™ Multi Zone Tension technology** was applied creating 5 different zones with tailored performance ensuring the best confidence and performance in every riding condition to get the best all-round Supersport tyre.

- ✓ Greek Pi shaped tread pattern ensures optimal drainage and maximum contact patch, for riders who always demand and expect the best performance.
- ✓ High Silica Compound (55%) with track derived resin blend: the perfect mix between sport performance and confidence on wet.
- ✓ Innovative lean indicator offers an evaluation of both product performance and rider's ability.



HIGH TENSION > MAX SUPPORT  
 LOW TENSION > BEST GRIP  
 HIGH TENSION > HIGH MILEAGE



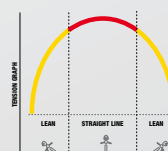
### ROADTEC INTERACT Z8

**Interact™ 3 Zone Tension technology** has been applied to improve handling and comfort, introducing a new level of riding enjoyment. From the first mile and in all weather conditions, Roadtec Z8 Interact lets you Enjoy the distance safely.

- ✓ 3 zone tension gives touring mileage and sporty grip exactly where needed without any discontinuity.
- ✓ High Silica compound with nano-particles: ensuring performance and safety in all weather conditions.
- ✓ CMT profiles matched with Greek Pi shaped tread increases riding enjoyment.



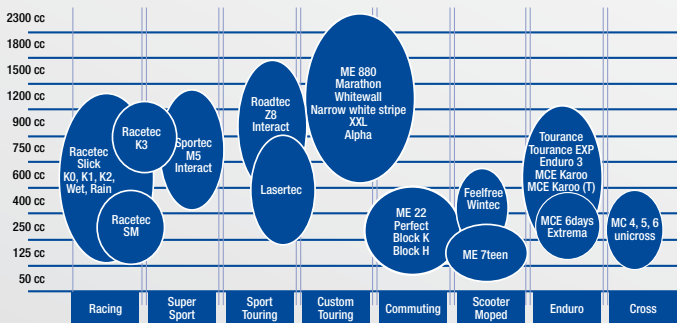
LOW TENSION > MAX GRIP  
 HIGH TENSION > MAX MILEAGE



# APPLICATION CHART

# SEGMENT DEFINITION

	Grip	Handling	Mileage	Wet Performance	Comfort
<b>Racetec K3</b>					
<b>Sportec M5 Interact™</b>					
<b>Roadtec Z8 Interact™</b>					
<b>Lasertec</b>					
<b>ME 880 Marathon</b>					



## RACING

Page 9 - 12



**Racetec Slick**  
Racetec Slick CompK

**Racetec Wet**  
Intermediate

**Racetec Rain**



**Racetec SM**

**Racetec**  
K0, K1, K2

## SUPERSPORT

Page 13 - 15



**Racetec K3**

**Sportec M3**

**Sportec M5 Interact™**

## SPORT TOURING

Page 16 - 19



**Roadtec Z6**

**Roadtec Z8 Interact™**

**Lasertec**

## CLASSIC

Page 20 - 21



**ME 22**

**Perfect ME 77**

**Perfect ME 11**

**Block K**

**Block C**

## CUSTOM TOURING

Page 22 - 27



**ME 880 Marathon**

**ME 880 Marathon XXL**

**ME 880 Whitewall**



**ME 880**  
Narrow White Stripe

**ME 88**  
Marathon

**Marathon**  
ML 2

# APPLICATION CHART

	On Road	Gravel	Trail	Sand	Competition
<b>Tourance Exp</b>					
<b>Tourance</b>	★★★★	★★	★		
<b>Enduro 3 Sahara</b>	★★★	★★★	★★	★	
<b>MCE Karoo (T)</b>	★★	★★★	★★★	★	★
<b>MCE Karoo</b>	★	★★★	★★★★	★★	★★
<b>MCE 6 Days Extreme</b>	★	★★★	★★★★	★★★★	★★★★

	Soft	Soft/Medium	Intermediate	Mid/Hard	Hard
	sand, mud	soil, grass, sandy, loose	grass, dry, solid, hard	loose surface, stones	rocky
<b>MC 4</b>	▶				
<b>MC 5</b>		▶			
<b>MC 6</b>			▶		
<b>Unicross</b>		▶			

# SEGMENT DEFINITION

## ENDURO STREET

Page 28 - 30



Tourance

Tourance EXP

Enduro 1

Enduro 2

## ENDURO

Page 31 - 35



Enduro 3 Sahara

MCE Karoo (T)

MCE Karoo

F.I.M. Competition

MCE 6 Days Extreme

## MOTOCROSS

Page 36 - 38



MC 4

MC 5

MC 6

Unicross

## SCOOTER

Page 40 - 41



Feelfree

Feelfree Wintec

## SCOOTER MOPED

Page 42



ME 7 Teen

ME 1

ME 5

MO 1

MO 90

# Your guide to Metzeler's Technology



METZELER PATENTED TECHNOLOGY

### Steel radial

Innovative belt structure, with a single ply of steel bandinas wrapped at 0° around a radial carcass. Patented technology by Metzeler for both front and rear high performance tires. Steel features a higher stiffness than textile and this allows the reduction of the tyre weight. Steel radial belt reduces the dynamic deformation of the tire under centrifugal forces giving the tyre an excellent high-speed stability. Thanks to the more uniform heat distribution, mileage is increased and wear characteristics are more uniform.

### MAW

"Metzeler Advanced Winding" patented winding system for optimum spacing between the bandinas of the 0° steel belt. Depending on the cross section position, the steel cords are wound with differentiated spacing. On both front & rear tire they're wider in the crown area for more elasticity and self damping, closer in the areas involved in mid leans for improved stiffness during fast cornering. On the shoulder area, but for the rear only, they're again wider for safe feedback and control at grip limit.

### Multiple radius contour

Engineering technology for contour design dedicated to high performance riding. The contour curvature is differentiated between crown and shoulder area, in order to provide most intuitive and effective handling and grip characteristics. The crown and shoulder areas feature a sharper radius for faster and more precise handling (crown) and safer stability limit feedback (shoulder). A wider radius characterizes the side area, ensuring a larger contact patch for cornering stability.

### MBS

"Metzeler Belt System" is the patented technology by Metzeler for diagonal belt on conventional tires. This modular-like construction technology really allows tuning each single size to the specific needs of the bikes for superior stability. This means that weight and performance of the tire are specifically developed for classic powerful bikes, enhancing their dynamic performance.

### MBS-Radial

This symbol identifies a tire with radial carcass and diagonal belt, realized with the MBS technology. The radial carcass allows building a low section tire for enhanced cornering stability and reduced weight, while the diagonal belt limits the tire deformations for high speed performance.

### Single radius contour

Specific tire contour developed for Custom-Touring bikes, characterized by a very smooth design. Bike specific profile, especially for heavy models. The wide crown area ensures great comfort and stability at all speed, thus maintaining very high mileage characteristics. The round side area of the contour provides very linear and easy handling.

### CMT

Advanced design technology of tyre contour tuned on high performance riding style on modern bikes. Front and rear tyre profile matching is optimized through the combination of different profiles, each of them optimized for a single lean angle. The final contour design of the set features the best performing behaviour for every riding style and all modern bikes: predictability, grip limit feedback and cornering stability.

### FCM

"Fine Carbon Matrix" compound structure. This new compound has been obtained using the last generation of high-performance raw materials for a quicker adaptability to a wider range of conditions, going from cold to warm, from wet to dry. This new structure ensures highest level of grip both in dry and in wet conditions, thus maintaining extremely high mileage characteristics.

### Dura Sil

Latest generation of hi-performance compound, with high Silica content and new reinforcing elements to give better stiffness and superior mechanical resistance. This new compound has been developed to guarantee a fast and efficient adaptability from cold to hot, dry to wet, normal road to racetrack use with high durability.

### Interact

Multi Zone Tension. Modular steel string winding tension: the performance of the compound depends on the stiffness of the structure. Performance exactly where needed for maximum adaptability to different riding styles.

### Wintec

Sipes application for fast warm up and incredible contact feeling with a compound designed to work perfectly at low temperatures. The Wintec technology allows to ride 12 months a year in safe conditions without compromising the performances.

Range: Racetec, Sportec M3, Sportec M5 Interact, Roadtec Z8 Interact, Roadtec Z6, ME 880, Tourance EXP, Tourance, MCE Karoo

Range: on all our steel belted tires

Range: Racetec Wet, Racetec Rain, Lasertec

Range: Lasertec, ME 880, ME 88, ML 2

Range: ME 880, Tourance EXP, Tourance

Range: ME 880, Perfect ME 22, Perfect ME 11, Perfect ME 77, ME 88, ML 2, Block K, Block K

Range: Racetec, Sportec M5 Interact, Sportec M3, Roadtec Z8 Interact, Roadtec Z6

Range: Roadtec Z8 Interact, Roadtec Z6

Range: Sportec M5 Interact, Sportec M3

Range: Sportec M5 Interact, Roadtec Z8 Interact, Racetec

Range: Feelfree Wintec

# Racetec Slick

NHS competition tyres developed for racetrack use

- Front tyre contour developed for fast handling, easy and precise turn-in and trajectory stability
- Specific rear tyre contour engineered for the high performance of modern hyper sport bikes supporting full power accelerations
- Different compounds specifically developed for best adaptability to different conditions, always ensuring grip at top level



METZELER PATENTED TECHNOLOGY



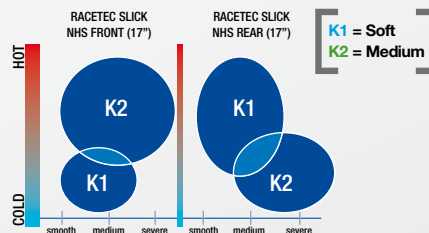
METZELER ADVANCED WINDING



CONTOUR MODELLING TECHNOLOGY

FRONT SIZE	SPECIAL VERSION	IP CODE	NOTE
17 120/70 R 17 NHS TL	K1	1736300	
120/70 R 17 NHS TL	K2	1736400	

REAR SIZE	SPECIAL VERSION	IP CODE	NOTE
17 180/55 R 17 NHS TL	K2	1587700	
190/60 R 17 NHS TL	K1	2243600	NEW
190/60 R 17 NHS TL	K2	2243700	NEW



Note: Temperature information is measured on track surface. Compound choice can vary depending on bike setup and riding style. Please check with your dealer or racing service.

# Racetec Slick CompK

NHS tyres for amateur racing and competition preparation

- New "CompK" version with higher duration compound for increased enjoyment and time on racetrack

FRONT SIZE	SPECIAL VERSION	IP CODE	NOTE
17 120/70 R 17 NHS TL	CompK	1991400	

REAR SIZE	SPECIAL VERSION	IP CODE	NOTE
17 180/55 R 17 NHS TL	CompK	1991300	
190/55 R 17 NHS TL	CompK	1991200	

TL = Tubeless  
NHS = Not for Highway Service



## RACING



## Racetec WET (Intermediate)

**NHS competition tyre specifically developed for wet conditions**

- Proven tread pattern design combined with latest generation High-Silica compound for outstanding grip in wet
- Specific tyre contour for great contact feeling, ensuring great stability and feedback when braking entering into corners
- Overall tyre performance tuned on racetrack fitting the needs of all categories' bikes, from SBK to Super sport



FRONT SIZE	SPECIAL VERSION	IP CODE	NOTE
17 120/70 R 17 NHS TL		1803300	

REAR SIZE	SPECIAL VERSION	IP CODE	NOTE
17 190/60 R 17 NHS TL		1803500	

## Racetec Rain

**NHS competition tyre designed for competition under rain**

- Blocked tread pattern design, developed with a completely new specification and an updated compound ideal for usage on Supermotard
- Latest generation of Silica compounds for faster warm-up, great water absorption ensuring great grip and traction
- New stripe tread pattern design designed for improved water drainage and contact feeling at all lean angles



FRONT SIZE	SPECIAL VERSION	IP CODE	NOTE
17 120/70 R 17 NHS TL	K1	1588500	

REAR SIZE	SPECIAL VERSION	IP CODE	NOTE
17 160/60 R 17 NHS TL	K1	1588900	BLOCK
180/55 R 17 NHS TL	K2	1589200	
190/60 R 17 NHS TL	K1	1775200	
190/60 R 17 NHS TL	K2	1775300	

**Supermoto oriented application - Block pattern**

TL = Tubeless  
NHS = Not for Highway Service

## RACING



## Racetec SM K1, K2

**"Supermoto" specialized tyre of the Racetec line. Advanced racing compounds and new profile for the most effective straight or sideways riding**

- Brand new compounds more adaptable to different racetrack conditions: progressive sliding with excellent traction
- Carcass tuned for very predictability both on-road as well as off-road, with excellent self-damping
- Profile re-designed for ease of Supermoto style riding; quick direction changes and superior contact feeling and confidence in drift position

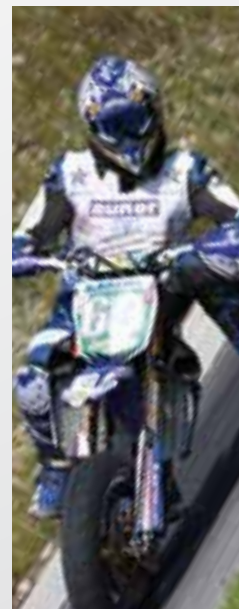


FRONT SIZE	SPECIAL VERSION	IP CODE	NOTE
16,5 125/80 R 420 NHS TL	K1	1991500	
125/80 R 420 NHS TL	K2	1991600	
17 125/80 R 17 NHS TL	K1	1991700	
125/80 R 17 NHS TL	K2	1991800	

REAR SIZE	SPECIAL VERSION	IP CODE	NOTE
17 165/55 R 17 NHS TL	K1	1991900	
165/55 R 17 NHS TL	K2	1992000	

TL = Tubeless  
NHS = Not for Highway Service

**K1 = Cold, dirt track**  
**K2 = Warm, clean track**



# RACING



## Racetec K0, K1, K2

With Interact™ Technology. Latest patented technology solution for Pure Race Time

- Modular steel string winding tension for a modular behavior from crown to shoulder maximizing footprint area at different lean angles without discontinuity
- New generation of low thermo plasticity compounds for faster and homogeneous warm up and higher grip in every race situation
- New compact tread pattern design to reduce tearing and control progressively the distribution of land / sea ratio (patented) for linear ride at every lean angle
- Wide range of compounds precisely tuned for specific weather and surface conditions, ensuring always the right choice from professional races to racing for fun

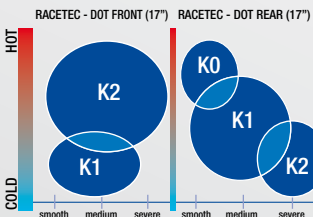


FRONT SIZE	SPECIAL VERSION	IP CODE	NOTE
17 120/70 ZR 17 M/C 58W TL	K1	1869300	
120/70 ZR 17 M/C 58W TL	K2	1869400	

REAR SIZE	SPECIAL VERSION	IP CODE	NOTE
17 180/55 ZR 17 M/C 73W TL	K1	1869700	
180/55 ZR 17 M/C 73W TL	K2	1869800	
180/60 R 17 M/C 75W TL	K0	2071200	
180/60 ZR 17 M/C 75W TL	K1	2071300	
180/60 ZR 17 M/C 75W TL	K2	2071400	
190/55 ZR 17 M/C 75W TL	K1	1870100	
190/55 ZR 17 M/C 75W TL	K2	1870200	

TL = Tubeless

**K0 = Supersoft**  
**K1 = Soft**  
**K2 = Medium**



**Note:** Temperature information is measured on track surface. Compound choice can vary depending on bike setup and riding style. Please check with your dealer or racing service.

# SUPERSPORT



## RACETEC INTERACT K3

With Interact™ Technology  
Enjoy the road, enjoy the racetrack

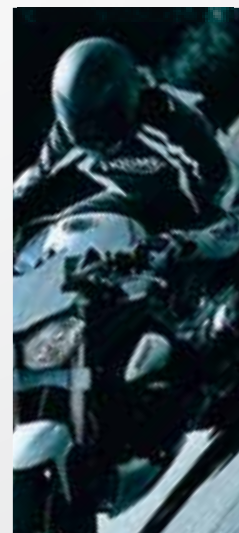
- K3 compound. Specification dedicated for street legal use, bringing the winner of primary national Championships to the normal road
- State of the art compounds for maximized cornering grip at full lean angles: faster cornering, with total stability of trajectory
- Modular steel string winding tension of the patented 0° steel belt to ensure excellent braking stability with precise turning-in: highest progressivity of grip limit and feedback



FRONT SIZE	SPECIAL VERSION	IP CODE	NOTE
17 120/70 ZR 17 M/C (58W) TL		1869500	

REAR SIZE	SPECIAL VERSION	IP CODE	NOTE
17 180/55 ZR 17 M/C (73W) TL		1869900	
190/50 ZR 17 M/C (73W) TL		1870400	
190/55 ZR 17 M/C (75W) TL		1870300	

TL = Tubeless



Properties	Effect	Consumer Use
Modular steel string winding tension	Compound modular behavior from crown to shoulder	Higher cornering precision: open the throttle earlier
Highly efficient mixing technology	Faster and homogeneous warm up	Faster riding from the first lap and perfect trajectories throughout the entire session
New concept of tread pattern design (patented)	Stability and linearity in every movement	Improved ability to hold a line

### PRESS

**PS MAGAZINE**  
Germany

“...The K3 is definitely the big throw. Has no weaknesses, is good natured and drives like a racing tyre. Combines very good lap times with long lasting performance for many laps...”  
Issue: 06/2010

**MOTOCICLISMO**  
Spain

“... is a masterpiece. Indulgent tyre with perfect stability and accuracy on a high level...”  
Issue: 07/2010

# SUPERSPORT

**SPORTEC**  
**INTERACT MS**

## The perfect all-round Supersport tyre

- Interact™ Technology. Five zone tension: the new tension layout ensures the best balance between mileage for your ride, high grip for sporty riding on road and precision at maximum lean.
- Interact™. New generation of riding of riding feeling: an incredible sense of confidence while leaning together with a very fast and easy stand up while exiting the curve for true riding pleasure.
- New high Silica compound sets the new benchmark of the segment for wet behavior among all typical ranges of temperature for safety feeling and confidence on wet

**O'STEEL**  
**RADIAL**  
METZELER PATENTED TECHNOLOGY

**MAW**  
METZELER ADVANCED WINDING

**DURA SIL**  
HI-PERFORMANCE COMPOUND

**INTERACT**  
MULTI-ZONE TENSION

FRONT SIZE	SPECIAL VERSION	IP CODE	NOTE
17 110/70 ZR 17 M/C 54W TL		2028100	
120/60 ZR 17 M/C (55W) TL		1971200	
120/70 ZR 17 M/C (58W) TL		1927400	
120/70 ZR 17 M/C (58W) TL (E)	Kawasaki ZZR1400	2158200	NEW

REAR SIZE	SPECIAL VERSION	IP CODE	NOTE
17 150/60 ZR 17 M/C 66W TL		2028200	
160/60 ZR 17 M/C (69W) TL		1971300	
170/60 ZR 17 M/C (72W) TL		2028300	
180/55 ZR 17 M/C (73W) TL		1927600	
190/50 ZR 17 M/C (73W) TL		1948500	
190/50 ZR 17 M/C (73W) TL (E)	Kawasaki ZZR1400	2158300	NEW
190/55 ZR 17 M/C (75W) TL		1927500	
190/55 ZR 17 M/C (75W) TL (C)	BMW K1300S/R	2158400	NEW
200/50 ZR 17 M/C (75W) TL		2028400	

TL = Tubeless

Properties	Effect	Consumer Use
Five zone tension: modular steel string winding tension	Linear change of tyre softness along the profile	Performance exactly where needed
New generation of Dura Sil compound	Quick warm up and wet traction	Safety feeling in every riding condition
$\pi$ shaped Tread Design	Modern look and Improved lasting	Cool and smart

### PRESS

#### PERFORMANCE BIKES UK

“...Bike feels great on these, very light, planted and positive....”  
“Feels like they have really concentrated on making the best road tyre they...”  
Issue: 07/2010

#### MOTO ET MOTARDS France

“... At every corner we were pleasantly surprised...”  
Issue: 05/2011

**METZELER**



**ROBOTEC**  
**INTERACT Z8**

## Enjoy the Distance Safely

- Interact™ technology with three zone tension that enhances ride enjoyment; High Mileage and Safety Feeling when cornering
- Riding easiness, Predictability, Neutrality in Manouvers
- CMT (Contour Modeling Technology) delivers more intuitive and effective handling characteristics.
- New  $\pi$  shaped Tread Pattern design provides improved water drainage, safety on wet and modern look.
- New compound solutions with a wider application range to satisfy every possible Sport Touring need

**O'STEEL**  
**RADIAL**  
METZELER PATENTED TECHNOLOGY

**MAW**  
METZELER ADVANCED WINDING

**CMT**  
CONTOUR MODELLING TECHNOLOGY

**INTERACT**  
MULTI-ZONE TENSION

FRONT SIZE	SPECIAL VERSION	IP CODE	NOTE
17 110/70 ZR 17 M/C 54W TL		2186100	NEW
120/60 ZR 17 M/C (55W) TL		2068900	
120/70 ZR 17 M/C (58W) TL		2008300	
120/70 ZR 17 M/C (58W) TL (E)	Honda NC700/S/X	2126600	NEW
18 110/80 ZR 18 M/C (58W) TL		2185800	NEW
120/70 ZR 18 M/C (59W) TL		2185900	NEW

REAR SIZE	SPECIAL VERSION	IP CODE	NOTE
17 150/70 ZR 17 M/C (69W) TL		2069000	
160/60 ZR 17 M/C (69W) TL		2038800	
170/60 ZR 17 M/C (72W) TL		2069100	
180/55 ZR 17 M/C (73W) TL		2008400	
180/55 ZR 17 M/C (73W) TL (C)		2008500	
190/50 ZR 17 M/C (73W) TL		2008600	
190/50 ZR 17 M/C (73W) TL (C)		2008700	
190/55 ZR 17 M/C (75W) TL		2038900	
190/55 ZR 17 M/C (75W) TL (C)	BMW K1600 GT/GTL	2058200	
18 160/60 ZR 18 M/C (70W) TL		2186000	NEW

TL = Tubeless

Properties	Effect	Consumer Use
Multi Zone Tension Steel Belt	Progressive variation of carcass stiffness	Long Mileage combined with grip while leaning
High Silica Compound	Chemical Grip on Wet Surfaces	Reduced Braking Distance and increased safety feeling on wet
$\pi$ shaped Tread Design	Efficient Water Drainage	Safety on Wet with a modern look

### PRESS

#### MOTORRAD Germany

“...all round talent and wonderful stability, it knows no nervousness or stubbornness. You can always rely on it, no matter where...”  
Issue: 11/2011

# SPORT TOURING RADIAL



**METZELER**





## SUPERSPORT

### Sportec M3

Proven radial tyre developed for performance bikes



Replaced by Sportec M5 Interact™

**O'STEEL RADIAL**  
METZELER PATENTED TECHNOLOGY

**MAW**  
METZELER ADVANCED WINDING

**DURASIL**  
HIGH PERFORMANCE COMPOUND

**CMT**  
CONTOUR MODELING TECHNOLOGY

FRONT SIZE	SPECIAL VERSION	IP CODE	NOTE
16 130/70 ZR 16 M/C (61W) TL		1590600	
17 120/60 ZR 17 M/C (55W) TL		1590300	
120/65 ZR 17 M/C (56W) TL		1590400	
120/70 ZR 17 M/C (58W) TL		1590500	
120/70 ZR 17 M/C (58W) TL (E)	BMW K1300S	1729000	

REAR SIZE	SPECIAL VERSION	IP CODE	NOTE
17 160/60 ZR 17 M/C (69W) TL		1590800	
180/55 ZR 17 M/C (73W) TL		1591000	
190/50 ZR 17 M/C (73W) TL		1591100	
190/55 ZR 17 M/C (75W) TL (E)	BMW K1300S, K1300R	1755100	
190/55 ZR 17 M/C (75W) TL		1828400	

TL = Tubeless

### Roadtec Z6

Sport-Touring radial tyre delivering performance in all-weather conditions

**O'STEEL RADIAL**  
METZELER PATENTED TECHNOLOGY

**MAW**  
METZELER ADVANCED WINDING

**CMT**  
CONTOUR MODELING TECHNOLOGY

**FCM**  
FINE CARBON MIXTURE

FRONT SIZE	SPECIAL VERSION	IP CODE	NOTE
17 110/70 ZR 17 M/C 54W TL		1448300	
120/60 ZR 17 M/C (55W) TL		1448200	
120/70 ZR 17 M/C (58W) TL		1448100	
120/70 ZR 17 M/C (58W) TL (C)	BMW K1200GT	1634400	
120/70 ZR 17 M/C (58W) TL (E)	Yamaha MT01	1611100	
120/70 ZR 17 M/C (58W) TL (G)	Honda VFR800 RC46, Yamaha FJR1300 - 2006, FZ6 RJO7	1611000	
120/70 ZR 17 M/C (58W) TL (K)	BMW K1200R	1606600	
120/70 ZR 17 M/C (58W) TL (U)	BMW K1200S, K1200R '05, K1200R Sport '07	1631200	
18 110/80 ZR 18 M/C (58W) TL		1448500	
120/70 ZR 18 M/C (59W) TL		1448400	

REAR SIZE	SPECIAL VERSION	IP CODE	NOTE
17 150/70 ZR 17 M/C (69W) TL		1448800	
160/60 ZR 17 M/C (69W) TL		1448700	
160/70 ZR 17 M/C 73W TL		1619500	
170/60 ZR 17 M/C (72W) TL		1449100	
180/55 ZR 17 M/C (73W) TL		1448600	
180/55 ZR 17 M/C (73W) TL (C)	BMW K1200R, K1200GT/RS, R1100S, Ducati ST3, ST4S, Yamaha FJT 1300/A, Kawasaki ZRX1200S, ZZ-R 1200, Suzuki GSF 1200, SV1000	1561800	
180/55 ZR 17 M/C (73W) TL (K)	BMW K1200GT, R1200RT SF	1580000	
190/50 ZR 17 M/C (73W) TL		1449000	
190/50 ZR 17 M/C (73W) TL (E)	Yamaha MT01	1611200	
190/50 ZR 17 M/C (73W) TL (U)	BMW K1200S, K1200R '05, K1200R Sport '07	1631300	
18 160/60 ZR 18 M/C (70W) TL		1448900	

TL = Tubeless

## SPORT TOURING RADIAL



Replaced by Roadtec Z8 Interact

## Lasertec

The newest materials and compound technology applied to a classic tread pattern design for enhanced performance out of your bike

- Compound with high Silica developed for outstanding grip both in dry and in wet enhancing riding performance
- "Sport Touring" carcass design with lighter, more resistant Polyester fibre giving higher comfort and improving handling
- "Classic" tread pattern design ensuring effective water dispersal for safe wet riding and wear regularity with long-lasting mileage



## S/H rated

FRONT SIZE	SPECIAL VERSION	IP CODE	NOTE
16 100/90 - 16 M/C 54H TL		1529700	
17 100/80 - 17 M/C 52S TL		1529600	
110/70 - 17 M/C 54H TL		1530300	
110/80 - 17 M/C 57H TL		1530400	
18 90/90 - 18 M/C 51H TL		1531700	
100/90 - 18 M/C 56H TL		1529800	
110/90 - 18 M/C 61H TL		1704200	
110/80 - 18 M/C 58H TL		1530500	
110/80 - 18 M/C 58H TL (T)	Triumph Speedmaster	1595800	
19 3.25 - 19 M/C 54H TL		1531300	
3.50 - 19 M/C 57H TL		1531500	
100/90 - 19 M/C 57H TL		1530000	
110/90 - 19 M/C 62H TL		1530800	
21 90/90 - 21 M/C 54H TL		1531800	

REAR SIZE	SPECIAL VERSION	IP CODE	NOTE
15 130/90 - 15 M/C 66S TL		1806700	
16 130/90 - 16 M/C 67H TL		1532300	
17 130/70 - 17 M/C 62S TL		1532500	
130/70 - 17 M/C 62H TL		1532600	
130/80 - 17 M/C 65H TL		1532700	
130/90 - 17 M/C 68H TL		1532800	
140/70 - 17 M/C 66H TL		1840600	
150/70 - 17 M/C 69H TL		1533500	
18 110/90 - 18 M/C 61H TL		1531900	
120/80 - 18 M/C 62H TL		1532000	
120/90 - 18 M/C 65H TL		1532100	
130/70 - 18 M/C 63H TL		1533000	

TL = Tubeless

## V rated

FRONT SIZE	SPECIAL VERSION	IP CODE	NOTE
16 110/90 - 16 M/C 59V TL		1530200	
110/90 V 16 M/C (59V) TL		1534600	
120/80 V 16 M/C (60V) TL		1531000	
120/80 VB 16 M/C (60V) TL		1531100	
17 110/80 V 17 M/C (57V) TL		1534700	
120/70 - 17 M/C 58V TL		1531200	
18 100/90 - 18 M/C 56V TL		1529900	
100/90 V 18 M/C (56V) TL		1534500	
110/90 V 18 M/C (61V) TL		1530700	
110/80 - 18 M/C 58V TL		1530600	
110/80 V 18 M/C (58V) TL		1534800	
19 3.25 - 19 M/C 54V TL		1531400	
3.50 - 19 M/C 57V TL		1531600	
100/90 - 19 M/C 57V TL		1530100	

REAR SIZE	SPECIAL VERSION	IP CODE	NOTE
16 130/90 - 16 M/C 67V TL		1532400	
150/80 VB 16 M/C (71V) TL		1533400	
17 130/90 - 17 M/C 68V TL		1532900	
140/80 B 17 M/C 69V TL		1533200	
140/80 VB 17 M/C (69V) TL		1534900	
150/70 B 17 M/C 69V TL		1533600	
150/70 VB 17 M/C (69V) TL		1533700	
160/70 B 17 M/C 73V TL		1533800	
18 4.00 - 18 M/C 64V TL		1533900	
120/90 - 18 M/C 65V TL		1532200	
130/80 V 18 M/C (66V) TL		1533100	

TL = Tubeless



## Metzeler Classic

Classic tread patterns dedicated to medium-small capacity motorcycles, providing great performance and optimum visual fitment

- Tyre contour with wide curvature for high precision in setting trajectories and providing easy handling
- Specific tread design with dedicated groove geometry for great water drainage, very high mileage and constant performance
- Good grip both in dry as well as in wet conditions, with high skid resistance



## ME 22

FRONT/REAR SIZE	SPECIAL VERSION	IP CODE	NOTE
17 2.50 - 17 43P Reinf		0711600	
2.75 - 17 47P Reinf		0115800	
3.00 - 17 M/C 50P Reinf		0116100	
18 2.75 - 18 M/C 42P		2044400	
2.75 - 18 M/C 48P Reinf TL		1546300	
3.00 - 18 M/C 52P Reinf TL		2045500	
3.25 - 18 59P Reinf		0113700	
3.50 - 18 62P Reinf		0114400	
90/90 - 18 M/C 57P Reinf		2045000	



## Perfect ME 77

FRONT SIZE	SPECIAL VERSION	IP CODE	NOTE
16 110/90 - 16 M/C 59S		1016500	
18 3.50 - 18 56S TL		0130400	

REAR SIZE	SPECIAL VERSION	IP CODE	NOTE
15 130/90 - 15 M/C 66S TL		1268200	
140/90 - 15 M/C 70S		0747300	
16 4.60 - 16 59S TL		0131000	
110/90 - 16 M/C 59S TL		1077700	
120/90 - 16 M/C 63H TL		0133100	
18 3.00 - 18 M/C 47S TL		1204700	
3.50 - 18 56S		0130500	
4.00 - 18 64H TL		0131800	
4.10 - 18 60H TL		0132000	
19 3.50 - 19 57S TL		0130900	

TL = Tubeless

## Perfect ME 11

FRONT SIZE	SPECIAL VERSION	IP CODE	NOTE
18 3.25 - 18 52H		0111700	
90/90 - 18 M/C 51H TL		0112400	
19 3.00 - 19 49S		0747200	
3.25 - 19 54S TL		0111100	
3.60 - 19 52S TL		0111400	



## Block K

FRONT/REAR SIZE	SPECIAL VERSION	IP CODE	NOTE
18 4.00 - 18 64P		0109700	



## Block C

FRONT/REAR SIZE	SPECIAL VERSION	IP CODE	NOTE
16 2.75 - 16 46P Reinf		0109200	
3.25 - 16 55P Reinf		0109500	
3.50 - 16 58P Reinf		0109600	
2.50 - 16 41P Reinf		1419400	
18 3.25 - 18 M/C 52S		0712800	
4.00 - 18 64H (C)	TOURING SPEC	0110100	
19 3.00 - 19 54P Reinf		0109800	
3.25 - 19 54P		0109900	
3.50 - 19 57P		0110000	

TL = Tubeless



## ME 880 Marathon

Premium line dedicated to cruiser and heavy touring bikes, featuring high-tech construction with fashionable design

- Radial and bias-ply replacement sizes for the '09-10 Harley-Davidson Fat Boy and FLH Touring family
- Soft compound for high grip allowing to exploit great torque output with total control
- Machine-specific carcass construction for exceptional riding comfort and stability at all speeds, even under heavy load
- Tread pattern design with offset central groove's alignment providing very high mileage for never-ending riding fun



### S/H Rated

FRONT SIZE	SPECIAL VERSION	IP CODE	NOTE
15 160/80 - 15 M/C 74S		1733200	
16 130/90 - 16 M/C 67H TL		1040800	
150/80 - 16 M/C 71H TL		1041200	
150/80 R 16 M/C TL 71H		1936600	Radial
17 130/80 B 17 M/C 65H TL		1950900	MBS
140/80 - 17 M/C 69H TL		1624200	
150/80 - 17 M/C 72H TL		1705400	
18 100/90 - 18 M/C 56H TL		1193700	
110/90 - 18 M/C 61H TL		1166100	
120/90 B 18 M/C 65H TL		1040900	MBS
130/70 B 18 M/C 63H TL		1314100	MBS
130/70 R 18 M/C 63H TL (GL)	Honda GLX 1800	1679900	Radial
130/70 R 18 M/C 63H TL (H)	Honda VTX 1800	1414900	Radial
140/70 B 18 M/C 73H Reinf		1847000	MBS
19 100/90 - 19 M/C 57H TL	Triumph Speedmaster	1040700	
100/90 - 19 M/C 57H	Honda VT750	2000200	
110/90 - 19 M/C 62H TL		1041100	
21 80/90 - 21 M/C 48H		1041000	
90/90 - 21 M/C 54H TL		1480400	
120/70 - 21 M/C 62H TL		1716100	
120/70 B 21 M/C 68H Reinf TL		2210900	MBS - NEW

REAR SIZE	SPECIAL VERSION	IP CODE	NOTE
15 140/80 B 15 M/C 67H TL		1042200	MBS
140/90 B 15 M/C 70H TL		1041600	MBS
150/90 B 15 M/C 80H Reinf		1041800	MBS
170/80 B 15 M/C 77H TL	Triumph Speedmaster	1041900	MBS
180/70 B 15 M/C 76H TL		1042100	MBS
200/70 B 15 M/C 82H TL		1401800	MBS
16 130/90 B 16 M/C 73H Reinf		1041400	MBS
140/90 B 16 M/C 77H Reinf		1041500	MBS
150/80 B 16 M/C 71H TL		1042000	MBS
150/80 B 16 M/C 71H	Honda VT750	1972800	MBS
150/80 B 16 M/C 77H Reinf TL		1846900	MBS
160/80 B 16 M/C 75H TL		1422300	MBS
180/60 R 16 M/C 74H TL (G)	Honda GLX 1800	1422500	Radial
180/65 B 16 M/C 81H Reinf TL		1951000	MBS
180/70 R 16 M/C 77H TL		1042600	Radial
17 120/90 - 17 M/C 64S		1733100	
160/70 B 17 M/C 73H TL (D)		1755400	MBS
18 150/70 B 18 M/C 76H Reinf TL		1847100	MBS
200/50 R 18 M/C 76H TL		2031500	MBS - NEW
210/40 R 18 M/C 73H TL		1808200	Radial

TL = Tubeless



### V Rated

FRONT SIZE	SPECIAL VERSION	IP CODE	NOTE
16 150/80 R 16 M/C 71V TL		1705300	Radial
17 120/70 B 17 M/C 58V TL		0966700	MBS
120/70 R 17 M/C 58V TL		1044700	Radial
120/80 - 17 M/C 61V TL		1124900	
130/70 R 17 M/C 62V TL		1624000	Radial
140/75 R 17 M/C 67V TL		1970800	Radial
150/80 R 17 M/C 72V TL		1335100	Radial
18 130/60 VR 18 M/C (60V) TL		1568200	Radial
130/70 R 18 M/C 63V TL		2158100	Radial NEW
21 120/70 - 21 M/C 62V TL		1289300	
140/70 - 21 M/C 76V TL Reinf		1772400	
24 130/70 - 24 M/C 69V TL		1712500	

### REAR SIZE

REAR SIZE	SPECIAL VERSION	IP CODE	NOTE
15 150/80 B 15 M/C 70V TL		1125000	MBS
16 200/60 R 16 M/C 79V TL		1307500	Radial
17 140/80 B 17 M/C 69V TL		1193800	MBS
160/70 B 17 M/C 79V Reinf		0966800	MBS
170/60 R 17 M/C 78V Reinf TL		1862200	Radial
200/55 R 17 M/C 78V TL		1970900	Radial
18 160/60 R 18 M/C 76V Reinf		1555800	Radial
180/55 VR 18 M/C (74V) TL		1346100	Radial

### ZR Rated

FRONT SIZE	SPECIAL VERSION	IP CODE	NOTE
18 120/70 ZR 18 M/C (59W) TL		1606900	ZR
19 120/70 ZR 19 M/C (60W) TL		1420100	ZR
120/70 ZR 19 M/C 60W TL	Triumph Thunderbird	1846500	ZR

### REAR SIZE

REAR SIZE	SPECIAL VERSION	IP CODE	NOTE
17 200/50 ZR 17 M/C 75W TL		1712300	ZR
210/50 ZR 17 M/C (78W) TL		1307600	ZR
18 180/55 ZR 18 M/C (74W) TL		1435100	ZR
200/50 ZR 18 M/C (76W) TL		1619600	ZR

TL = Tubeless





## ME 880 Marathon Alpha Sizes

- Excellent stability and riding comfort through dedicated structures tailored to every single size in relation to the needs of the specific bike
- High wet safety feeling and water drainage due to tread pattern design with deep grooves and specific long lasting compound
- Large contact patch when running straight reduces rolling noise and increases riding comfort



FRONT SIZE	SPECIAL VERSION	IP CODE	NOTE
16 MT90 B 16 M/C 72H TL		1769600	
21 MH90 - 21 M/C 54H TL		1769400	

REAR SIZE	SPECIAL VERSION	IP CODE	NOTE
16 MT90 B 16 M/C 74H TL		1769900	
MU85 B 16 M/C 77H TL		1770100	

TL = Tubeless

## ME 880 Marathon XXL

The ME 880 family range offers the best choice to satisfy all dreams of the Custom Touring world, perfectly combining highest performance and coolest style. Specially designed for the tuning fanatics it's the most demanded by the Custom Builders, as it is the unique Custom tyre on the market with a 0° steel belt

- 240 to and 300 18" rear sizes, suiting all customization needs
- High tech performance radial tyre joining performance with outstanding appearance: Wide - Wider - XXL
- 0° steel belt ensures outstanding dimensional stability for higher degree of freedom in tuning, making it possible to mount the rear fender extremely close to the tyre

REAR SIZE	SPECIAL VERSION	IP CODE	NOTE
16 240/50 R 16 M/C 84V TL		1205200	XXL
18 240/40 VR 18 M/C (79V) TL		1568300	XXL
260/40 VR 18 M/C (84V) TL		1594300	XXL
280/35 VR 18 M/C (84V) TL		1568400	XXL
300/35 VR 18 M/C (87V) TL		1615300	XXL

TL = Tubeless



Properties	Effect	Consumer Use
Size-specific structure design for enhanced self damping	Linear handling	Excellent comfort and riding stability at all speeds
Optimized tread pattern design	Optimal water drainage properties	Great water drainage and extended mileage High safety when wet
High Silica compound	Improved chemical grip	High safety in wet riding thanks to improved wet grip
Tyre contour developed for uniform pressure distribution on contact patch	Progressive cornering behavior Ideal contact patch between tyre and road	Predictable and progressive handling safety Uniform tread wear

## CUSTOM TOURING



## ME 880 Whitewall & ME 880 Narrow White Stripe

Fashionable, reliable x-ply tyre dedicated to the perfect visual fitment of heavy elite-style Touring-Cruiser motorcycles

- Trendy look and high quality finishing to support further distinctiveness of heavy exclusive Cruiser bikes
- Single-radius contour features neutral bike behaviour, perfectly combined with excellent high speed stability and riding comfort
- Offset tread grooves for high wet safety feeling and long-lasting mileage



### Metric

FRONT SIZE	SPECIAL VERSION	IP CODE	NOTE
16 130/90 - 16 M/C 67H TL	White Wall	1338700	
130/90 - 16 M/C 67H TL	Narrow White Stripe	1539600	
150/80 - 16 M/C 71H TL	White Wall	1415200	
19 100/90 - 19 M/C 57S	White Wall	1595600	

REAR SIZE	SPECIAL VERSION	IP CODE	NOTE
15 170/80 - 15 M/C 77S	White Wall	1595700	
170/80 - 15 M/C 77H TL	White Wall	1415100	
16 130/90 - 16 M/C 73H Reinf TL	White Wall	1338900	
150/80 B 16 M/C 71H TL	White Wall	1425900	
140/90 B 16 M/C 77H Reinf	White Wall	1425800	
140/90 B 16 M/C 77H Reinf	Narrow White Stripe	1539700	

### Alpha Sizes

FRONT SIZE	SPECIAL VERSION	IP CODE	NOTE
16 MT90 B 16 M/C 72H TL	White Wall	1769700	
MT90 B 16 M/C 72H TL	Narrow White Stripe	1769800	
21 MH90 - 21 M/C 54H TL	White Wall	1769500	

REAR SIZE	SPECIAL VERSION	IP CODE	NOTE
16 MT90 B 16 M/C 74H TL	White Wall	1770000	
MU85 B 16 M/C 77H TL	White Wall	1770200	
MU85 B 16 M/C 77H TL	Narrow White Stripe	1770300	

TL = Tubeless



## CUSTOM TOURING

## ME 88 Marathon Marathon ML 2

Completing the touring-cruising range, offering very long mileage for daily commuting and long-distance journeys



ME 88 Marathon Marathon ML 2

REAR SIZE	SPECIAL VERSION	IP CODE	NOTE
17 130/90 B 17 M/C 74H Reinf		0149000	
18 120/90 B 18 71H Reinf		0148400	

REAR SIZE	SPECIAL VERSION	IP CODE	NOTE
15 150/90 B 15 M/C 74V TL		0127100	

TL = Tubeless

# ENDURO SREET

## TOURANCE™



Dual Purpose tyre developed and tuned for the big, modern street-oriented Enduro bikes

- Improved carcass structures for enhanced straight line stability at high speed with smooth rolling characteristics for long distance journeys
- Maximum mileage on the street and great traction also on light off-road surfaces thanks to the specific compound
- Great grip with light and precise handling make riding easier in all weather conditions

**O STEEL RADIAL**  
METZELER PATENTED TECHNOLOGY

**MAW**  
METZELER ADVANCED WINDING

**MBS**  
METZELER BEST SYSTEM

FRONT SIZE	SPECIAL VERSION	IP CODE	NOTE
19 100/90 - 19 M/C 57S		1012300	
100/90 - 19 M/C 57H TL		1012400	
100/90 - 19 M/C 57H TT (U)	HONDA XL700V TransAlp	1780000	
110/80 R 19 M/C 59V TL		1127800	
21 90/90 - 21 M/C 54S		1012500	
90/90 - 21 M/C 54H TL		1012600	

REAR SIZE	SPECIAL VERSION	IP CODE	NOTE
17 120/90 - 17 M/C 64S		1012200	
130/80 - 17 M/C 65S		1209400	
130/80 - 17 M/C 65S (G)	BMW 626 Scrambler	1706900	
130/80 R 17 M/C 65S TL		1086800	
130/80 R 17 M/C 65H TL		1012000	
140/80 R 17 M/C 69H TL		1012100	
150/70 R 17 M/C 69V TL		1127900	

TL = Tubeless



## TOURANCE™ EXP

The sportiest enduro street tyre

- Metzeler's patented 0° steel belt technology on front and rear tyre provides great straight line and braking stability, maximum precision in curve and excellent bump absorption performances also in full loaded conditions.
- Improved compound for high grip on wet and dry surfaces: the perfect combination for long distance journeys
- New tread pattern design engineered to ensure best on-road performance in all weather conditions and traction on light off road surfaces
- "M" specification to satisfy higher mileage needs when mounted on large Enduro-street bikes

# ENDURO SREET



**O STEEL RADIAL**  
METZELER PATENTED TECHNOLOGY

**MBS**  
METZELER BEST SYSTEM

**MAW**  
METZELER ADVANCED WINDING

FRONT SIZE	SPECIAL VERSION	IP CODE	NOTE
19 100/90 - 19 M/C 57H TL		1815700	
100/90 - 19 M/C 57S		1815800	
110/80 R 19 M/C 59V TL		1715500	
110/80 R 19 M/C 59V TL (C)	Yamaha XT 1200Z Superténéré	1996100	
110/80 R 19 M/C 59V TL (H)	Honda XL 1000 V Varadero	1942500	
21 90/90 - 21 M/C 54S		1815900	
90/90 - 21 M/C 54V TL		1816000	

REAR SIZE	SPECIAL VERSION	IP CODE	NOTE
17 120/90 - 17 M/C 64S		1816100	
130/80 - 17 M/C 65S		1816200	
130/80 R 17 M/C 65S TL		1816300	
130/80 R 17 M/C 65H TL		1816400	
140/80 R 17 M/C 69V TL		1938200	
150/70 R 17 M/C 69V TL (C)	Yamaha XT 1200Z Superténéré	1998400	
150/70 R 17 M/C 69V TL (G)	BMW F800GS	2009400	
150/70 R 17 M/C 69V TL (H)	Honda XL 1000 V Varadero	1942600	
150/70 R 17 M/C 69V TL (M)		1998700	

TL = Tubeless

Properties	Effect	Consumer Use
Cap & base technology	Better absorption of road stresses	Stability on different terrain
Higher percentage of specific resins, special chemicals for efficient curing system	Performance lasting and outstanding grip	Fast warm-up and grip for intense pleasure in every exploration
More compact and continuous design	Safety feeling on wet surfaces and traction on light off road	Comfort, drainage and traction on every terrain

## Enduro 1, Enduro 2



All-round dual purpose tyre dedicated to on-road riding but with satisfying performance on light off-road terrains for a wide usage range

- Tread pattern design with oriented knobs distribution for smooth running performance: total comfort and performance on-road
- Compound tuned for on-road riding: power transmission, fast acceleration and hard braking with reliable skid resistance on different grounds

### Enduro 1

FRONT SIZE	SPECIAL VERSION	IP CODE	NOTE
21 2.75 - 21 45P		0138800	
3.00 - 21 51R		0139400	

### Enduro 1

REAR SIZE	SPECIAL VERSION	IP CODE	NOTE
17 4.60 - 17 62Q		0139500	
18 4.60 - 18 63R		0139800	
4.10 - 18 60P		0138900	

### Enduro 2

REAR SIZE	SPECIAL VERSION	IP CODE	NOTE
18 4.00 - 18 64R		0139200	

## Enduro 3 Sahara

Enduro tyre with very good on-road performance dedicated to the globetrotters always looking for fun riding no matter what the terrain is

- Dedicated tread compound perfectly combining safe on-road cornering grip and good off-road traction
- Tread pattern geometry designed for fast self-cleaning: stable and precise trajectories without skidding also on soft, muddy terrains
- Great handling with easy corner entry, stable cornering and high safety margins when riding at the limit



FRONT SIZE	SPECIAL VERSION	IP CODE	NOTE
21 90/90 - 21 M/C 54S.		2045700	
90/90 - 21 M/C 54T TL		0142600	
90/90 - 21 M/C 54H TL		1625800	

REAR SIZE	SPECIAL VERSION	IP CODE	NOTE
17 120/90 - 17 M/C 64S		0143600	
130/80 - 17 M/C 65S		0143900	
130/80 - 17 65T TL		0142700	
140/80 - 17 M/C 69H		0143700	
18 120/80 - 18 M/C 62S		2045600	
140/80 - 18 70R		0801400	
140/80 - 18 M/C 70S		1635600	
4.00 - 18 64S		0143000	

TL = Tubeless



## MCE Karoo (T)



**Knobby tyre for high performing enduro bikes designed to satisfy both the most demanding travellers needs highlighting a strong off-road appeal**

- Dedicated geometry and distribution of knobs perfectly combining reduced noise and enhanced braking stability especially with ABS braking systems
- Larger size and reduced height of knobs developed for higher traction and improved high speed resistance and mileage
- Top performance on-road: outstanding handling perfectly combined with a great cornering stability at all lean angles



FRONT SIZE	SPECIAL VERSION	IP CODE	NOTE
19 110/80 - 19 M/C 59Q M+S TL		1631000	
21 90/90 - 21 M/C 54Q M+S TL		1614300	
90/90 - 21 M/C 54R M+S TL	Husqvarna TE630	2039600	

REAR SIZE	SPECIAL VERSION	IP CODE	NOTE
17 140/80 - 17 M/C 69Q M+S TL		1614400	
150/70 - 17 M/C 69Q M+S TL		1631100	
18 140/80 - 18 M/C 70Q M+S TL		1666900	
140/80 - 18 M/C 70R M+S TL	Husqvarna TE630	2039700	

TL = Tubeless  
M+S = Mud + Snow

## MCE Karoo



**Knobby tyre for high performing enduro bikes designed to satisfy both the most demanding travellers needs highlighting a strong off-road appeal**

- Dedicated geometry and distribution of knobs perfectly combining reduced noise and enhanced braking stability especially with ABS braking systems
- Larger size and reduced height of knobs developed for higher traction and improved high speed resistance and mileage
- Top performance on-road: outstanding handling perfectly combined with a great cornering stability at all lean angles

FRONT SIZE	SPECIAL VERSION	IP CODE	NOTE
19 110/80 R 19 M/C 59R M+S TL		1205800	
21 90/90 - 21 M/C 54R M+S		1203100	

REAR SIZE	SPECIAL VERSION	IP CODE	NOTE
17 130/80 - 17 M/C 65R M+S		0887000	
140/80 - 17 M/C 69R M+S		0887400	
150/70 R 17 M/C 69R M+S TL		1205900	
18 140/80 - 18 M/C 70R M+S		0887300	
150/70 R 18 M/C 70R M+S TL		1268800	

TL = Tubeless  
M+S = Mud + Snow

## RACING RESULTS

# 2011 Metzeler 17 Times World Champion



Mika Ahola WEC E3 2011

**IVAN CERVANTES**  
WEC E1  
**SAMULI ARO**  
WEC E2  
**DAVID KNIGHT**  
WEC E3

**MIKA AHOLA**  
WEC E1  
**SAMULI ARO**  
WEC E3

**MIKA AHOLA**  
WEC E2  
**DAVID KNIGHT**  
WEC E3

**IVAN CERVANTES**  
WEC E1  
**SAMULI ARO**  
WEC E2  
**DAVID KNIGHT**  
WEC E3

**JUHA SALMINEN**  
WEC E1  
**MIKA AHOLA**  
WEC E2  
**IVAN CERVANTES**  
WEC E3

**MIKA AHOLA**  
WEC E1  
**JOHNNY AUBERT**  
WEC E2  
**IVAN CERVANTES**  
WEC E3

2005 2006 2007 2008 2009 2010

WEC - World Enduro Championship

**METZELER**

## ENDURO F.I.M.

# MCE 6 Days Extreme

Ultimate off-road tyre dominating the Enduro racing world developed with factory riders for your most extreme challenges

- New High Resistance Polyester carcass-material with X-ply construction for superior structural characteristics and excellent puncture resistance
- Knob distribution and geometry designed to offer outstanding grip and traction with high resistance both in dry and wet condition, from soft/loose terrains to hard
- World Enduro F.I.M. tyre



FRONT SIZE	SPECIAL VERSION	IP CODE	NOTE
21 90/90 - 21 M/C 54M M+S		2055100	
90/90 - 21 M/C 54M M+S	HARD	1744800	
90/100 - 21 M/C 57M MST		1706800	

REAR SIZE	SPECIAL VERSION	IP CODE	NOTE
18 120/90 - 18 M/C 65M M+S		1623800	
130/90 - 18 M/C 69M M+S		1907200	
140/80 - 18 M/C 70M M+S		1623900	

	Soft (sand, mud)	Mid Soft (soil, grass, sandy)	Mid Hard (loose surface, dry, solid)	Hard (stone, rocky)
FRONT	6 Days Extreme		6 Days Extreme Hard	
REAR	6 Days Extreme			

# MCE 6 Days Extreme MINI

The first professional set dedicated to young Enduro riders

- Carcass tailored on Mini Enduro bikes features for a perfect balance between weight and performance
- Racing compound ensures improved mechanical resistance for the best grip on different terrains

FRONT SIZE	SPECIAL VERSION	IP CODE	NOTE
21 80/90 - 21 M/C 48M M+S		1734800	

REAR SIZE	SPECIAL VERSION	IP CODE	NOTE
18 110/80 - 18 M/C 58M M+S		1734900	

M+S = Mud + Snow  
MST = Multi Service Tyre

**METZELER**

## MOTOCROSS

### MC 4



**Motocross competition tyre for enhanced performance tuned for soft to medium terrains**

- Excellent lateral stability and fast cornering, carving precise trajectories thanks to the intersected shoulder blocks
- Superb traction especially on soft, loose terrains for great accelerations out of corners
- Tread compound optimised for soft grounds featuring great stability especially when hard braking

FRONT SIZE	SPECIAL VERSION	IP CODE	NOTE
21 80/100 - 21 51R		0967300	

REAR SIZE	SPECIAL VERSION	IP CODE	NOTE
18 100/100 - 18 (59) NHS		0966900	
110/100 - 18 (64) NHS		0967000	
19 100/90 - 19 (57) NHS		0967100	
110/90 - 19 (62) NHS		0967200	

### MC 6

**Motocross competition tyre for enhanced performance tuned for medium-hard to rocky terrains**

- Tread pattern design optimised for great grip on medium-hard grounds, with reduced skidding even riding on stones or watered tracks
- Good self-damping allowing great trajectory precision, "flying" over stones and obstacles
- Maximum contact feeling in all conditions for constant grip during hard accelerations

FRONT SIZE	SPECIAL VERSION	IP CODE	NOTE
21 80/100 - 21 M/C 51R		0930800	

REAR SIZE	SPECIAL VERSION	IP CODE	NOTE
18 110/100 - 18 (64) NHS		0930100	
19 110/90 - 19 (62) NHS		0930600	

NHS = Not for Highway Service

## MOTOCROSS



### MC 5

**All-round motocross competition tyre tuned for "intermediate" terrains**

- Great braking performance for late and hard braking entering into corner with high stability
- Strongly reinforced half shoulder blocks: maximised traction on different terrains ensuring effective acceleration even at full lean
- Great control when sliding into corners thanks to progressive contact feeling

FRONT SIZE	SPECIAL VERSION	IP CODE	NOTE
21 80/100 - 21 M/C 51R		0930700	

REAR SIZE	SPECIAL VERSION	IP CODE	NOTE
18 100/100 - 18 (59) NHS		0929900	
110/100 - 18 (64) NHS		0930000	
120/100 - 18 (68) NHS		0930200	
19 100/90 - 19 (57) NHS		0930300	
110/90 - 19 (62) NHS		0930500	

NHS = Not for Highway Service

## Unicross



**All-terrain motocross tyre, developed for excellent performance on the most various ground conditions**

- Complete range DOT approved therefore suitable for road use and particularly suited for Enduro training
- High traction and adaptability in every condition, powering out of corners or climbing steep hills with great feedback and control
- Total lateral traction for great fun carving into corners, great knob resistance and damping

FRONT SIZE	SPECIAL VERSION	IP CODE	NOTE
21 90/90 - 21 M/C 54M M+S		1679000	

REAR SIZE	SPECIAL VERSION	IP CODE	NOTE
18 120/90 - 18 M/C 65M M+S		1679100	

M+S = Mud + Snow

**Winning tyre, "upgraded with spikes" at the Swedish round of the World Enduro Championship 2006, 2007 and 2008**

## Mousse

Metzeler mousse has been developed to replace the inner tube in off-road competitions together with Metzeler tyres. When fitted, a Metzeler mousse of the corresponding size provides an equivalent inflation pressure of 0.7bar +/-0.1. This means that particular attention has to be given to the tuning of the suspension system.

Metzeler mousses are marked NHS meaning they must not be used on public roads. When fitting a mousse, the mounting lubricant gel must be spread on the whole inside of the tyre cover, avoiding the beads.



FRONT SIZE	SPECIAL VERSION	IP CODE	NOTE
21 MOUSSE 21 A/I		9161800	
MOUSSE 21 A/I E		9168100	

REAR SIZE	SPECIAL VERSION	IP CODE	NOTE
18 MOUSSE 18 E/I		9153900	
19 MOUSSE 19 C/I		9161100	

## SCOOTER



### Feelfree

The ultimate generation of sport-touring tyre for high performance scooters, meeting the highest standards of performance and safety

- Optimized wet performance, thanks to a high contact area and a dedicated contour to provide high-speed stability, outstanding cornering behaviour and excellent handling
- Excellent riding comfort, long mileage, even wear thanks to the compound and tread pattern design based on the same prized motorcycle sport-touring tyres concepts
- The perfect premium fitment for the actual hi-performance scooters of all main manufacturers

#### Radial

FRONT SIZE	SPECIAL VERSION	IP CODE	NOTE
14 120/70 R 14 M/C 55H TL		1816600	
15 120/70 R 15 M/C 56H TL		1816700	

REAR SIZE	SPECIAL VERSION	IP CODE	NOTE
14 160/60 R 14 M/C 65H TL		1816900	
15 160/60 R 15 M/C 67H TL		1816800	
16 130/70 R 16 M/C 61S TL		1922100	

#### X-Ply

FRONT SIZE	SPECIAL VERSION	IP CODE	NOTE
12 110/90 - 12 64P TL		1660000	
120/70 - 12 51P TL		1823500	
13 110/70 - 13 M/C 48P TL		1995800	
110/90 - 13 M/C 56P TL		1755200	
14 120/70 - 14 M/C 55S TL		1659500	
120/80 - 14 M/C 58S TL		1660300	
15 120/70 - 15 M/C 56S TL		2213700	NEW
16 100/80 - 16 M/C 50P TL		1659700	
110/70 - 16 M/C 52P TL		1659800	
110/70 - 16 M/C 52S TL		1677800	

REAR SIZE	SPECIAL VERSION	IP CODE	NOTE
12 130/70 - 12 62P Reinf TL		1660100	
140/70 - 12 65P Reinf TL		1823600	
13 150/70 - 13 M/C 64S TL		1660200	
130/70 - 13 M/C 63P Reinf TL		1755300	
14 140/70 - 14 M/C 68P Reinf TL		1823800	
140/60 - 14 M/C 64P Reinf TL		1995900	
150/70 - 14 M/C 66S TL		1659600	
16 120/80 - 16 M/C 60P TL		1660400	
130/70 - 16 M/C 61P TL		1823900	
130/80 - 16 M/C 64P TL		1659900	
140/70 - 16 M/C 65P TL		1660500	

TL = Tubeless

## SCOOTER



### Feelfree Wintec

The industry's first cold weather tyre designed for safer winter scooter riding

- New replacement sizes for several common 50-250cc scooters
- "Cold and wet" high performance compound: excellent grip in wet and cold conditions, no matter the outside temperature.
- Sipes application for fast warm up and incredible contact feeling
- Tread design with motorcycle bike technology development for enhanced drainage and wet safety feeling

#### Radial

FRONT SIZE	SPECIAL VERSION	IP CODE	NOTE
14 120/70 R 14 M/C 55H M+S TL		1777200	
15 120/70 R 15 M/C 56H M+S TL		1777300	

REAR SIZE	SPECIAL VERSION	IP CODE	NOTE
14 160/60 R 14 M/C 65H M+S TL		1777500	
15 160/60 R 15 M/C 67H M+S TL		1777400	
16 130/70 R 16 M/C 61P M+S TL		2136700	NEW

#### X-Ply

FRONT SIZE	SPECIAL VERSION	IP CODE	NOTE
10 120/90 - 10 57P M+S TL		1976400	
12 120/70 - 12 51P M+S TL		1976000	
13 110/70 - 13 M/C 48P M+S TL		2035200	
130/60 - 13 M/C 53P M+S TL		1976200	
14 120/80 - 14 M/C 58S M+S TL		1870500	
15 120/70 - 15 M/C 56P M+S TL		1870600	
16 100/80 - 16 M/C 50P M+S TL		2185600	NEW
110/70 - 16 M/C 52P M+S TL		2136600	NEW

REAR SIZE	SPECIAL VERSION	IP CODE	NOTE
10 130/90 - 10 61P M+S TL		1976500	
12 130/70 - 12 M/C 62P M+S Reinf TL		1976100	
13 130/60 - 13 M/C 60P M+S Reinf TL		1976300	
150/70 - 13 M/C 64S M+S TL		1870700	
14 140/70 - 14 M/C 68P M+S Reinf TL		1870800	
140/60 - 14 M/C 64P M+S Reinf TL		2035300	
16 120/80 - 16 M/C 60P M+S TL		2185700	NEW

M+S = Mud + Snow

TL = Tubeless



## ME 7 Teen

Short sidewall scooter tyre developed for daily commuting in the urban jungle

- Good grip and easy handling for high riding performance especially in urban areas
- All season compound developed for effective water drainage and great performance in all weather conditions



FRONT/REAR SIZE	SPECIAL VERSION	IP CODE	NOTE
10 100/80 - 10 53L TL		0930900	
120/70 - 10 54L Reinf		0931100	
110/80 - 10 58L TL		0931000	
120/90 - 10 66L TL		0931300	
130/90 - 10 61L TL		0931400	
130/70 - 10 59L Reinf		1203000	
11 120/70 - 11 50L TL		0967400	
130/70 - 11 60L Reinf		0967500	
12 110/90 - 12 64L TL		0967800	
120/70 - 12 51L TL		0893800	
130/70 - 12 56L TL		0931600	
130/70 - 12 62L Reinf		1030800	
140/70 - 12 60L TL		0967600	
13 120/70 - 13 M/C 53L TL		0931700	
130/60 - 13 M/C 53L TL		0893900	
140/60 - 13 M/C 57L TL		0931900	

## Scooter/Moped

Complete range dedicated to the 50 to 250 cc capacity bikes and scooters, developed exploiting the experience of motorcycle products. Different pattern design and structures tuned for different models, focusing always on:

- Light handling and precise steering response provided through "single"-radius contour design
- Comfortable riding combined with high mileage and uniform wear thanks to the resistant yet flexible Nylon structure
- Good grip both in dry and in wet conditions allowing safe and fun riding of your scooter in the urban jungle



ME 1

ME 5



MO 1

MO 90

FRONT/REAR SIZE	SPECIAL VERSION	IP CODE	NOTE
10 3.00 - 10 50J Reinf	ME 1	0557600	
3.50 - 10 59J Reinf	ME 1	0558000	
90/90 - 10 50J TL	ME 1	0557200	
10 100/90 - 10 61J Reinf	ME 5	0123900	
16 2 3/4 - 16 46J Reinf	MO 1	0555700	
17 2 3/4 - 17 47J Reinf	MO 1	0556000	
2.50 - 17 43L Reinf	MO 1	1016200	
16 2 1/4 - 16 38J Reinf	MO 90	0968000	

TL = Tubeless

## A closer look at Metzeler Motorcycle Technology

### Bias tyre

Also indicated as conventional or x-ply tyre. The structure of this tyre is made of a carcass where, depending on the different speed and load specifications, two or more layers are overlapped. Each layer is made of textile cords coated into rubber and the overlap angle is designed in order to confer the tyre the required dynamic characteristics.

BIAS TYRE



### Bias-belted tyre

The structure of those tyres is realized with a conventional carcass and a belt made of two or more crossed layers. The difference between carcass and belt is given by the different goals that they have to fulfil and consequently the different materials that are used: the belt is made mainly from Aramide and it's function is reduce the dynamic deformation caused by centrifugal forces, while the carcass has to mainly give the tyre its stiffness and load carrying capacity.

BIAS - BELTED TYRE



### Belted tyre with radial carcass

The main difference of the bias-belted tyre is given by the structure of the carcass that in this case is radial. This means that its cords are wrapped radially around the tyre, from one bead to the other. In this way low-section tyres can be realized, giving big advantages in terms of cornering stability, reduced weight and high-speed performance. Its extremely high rigidity and the possibility to tune the winding spacing giving a differentiated stiffness distribution from shoulder to crown.

BELTED TYRE WITH RADIAL CARCASS (90 DEGREES)



### 0° steel belt tyre with radial carcass

Patented technology by Metzeler realizing the structure of both front and rear tyre using a radial carcass and a single layer belt made of steel. Considering the rolling direction of the tyre, the belt is wound circumferentially around the carcass giving an angle close to 0°. The advantages coming from the use of steel are its extremely high rigidity and the possibility to tune the winding spacing giving a differentiated stiffness distribution from shoulder to crown.

0°- STEEL BELTED TYRE WITH RADIAL CARCASS (90 DEGREES)

