

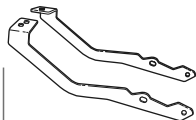
DIFFICULTY LEVEL

SHAD

CYCLONE RX 650 / RX 6 '25-

C0RX65ST

BCN



1 263817 x 1
263818 x 1



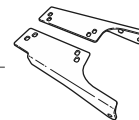
2 304211 x 4
M8x15 DIN 933



3 303045 x 8
Ø8



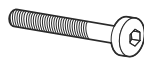
4 303027 x 8
Ø8



5 263819 x 1
263820 x 1



6 260538 x 4
Ø16 Ø9 x 9



7 304039 x 2
M8x40 DIN 7380



8 304170 x 2
M8x60 DIN 7380



9 303017 x 2
Ø6

WARNING!

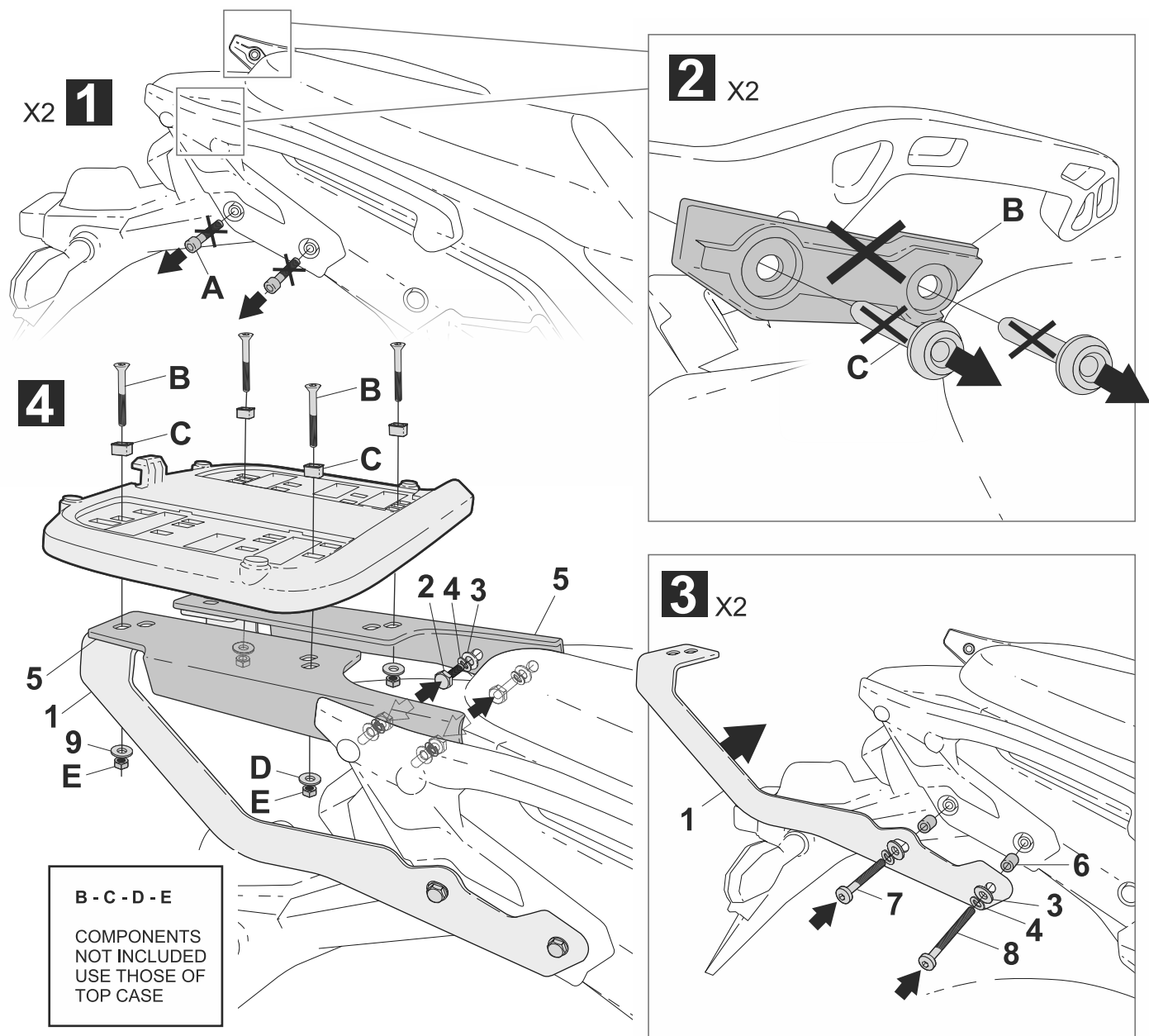
GB Do not fully tighten the screws until it is ensured that the KIT is correctly attached and aligned. Check tightness every 4 months..

E No apretar los tornillos del todo hasta asegurarse que el KIT está correctamente colocado y alineado. Repasar apriete cada 4 meses.

D Ziehen Sie die Schrauben nicht ganz fest, bevor Sie sich nicht vergewissert haben, daß der Bausatz korrekt eingestellt und ausgerichtet ist. Alle 4 Monate Drehmoment überprüfen.

I Non stringere del tutto le viti fin tanto non si è sicuri che il kit è collocato correttamente e allineato. Controllare il serraggio delle viti ogni 4 mesi.

F Ne pas serrer les vis avant d'être sûr que le KIT soit correctement positionné et ajusté. Vérifier le serrage des vis tous les 4 mois.



IMPORTANT: Based on European models. For compatibility with models in other continen check www.shad.es

WWW.SHAD.ES

REF. 500479 Edition 1ª